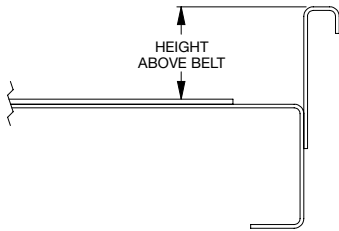


GUIDE RAILS

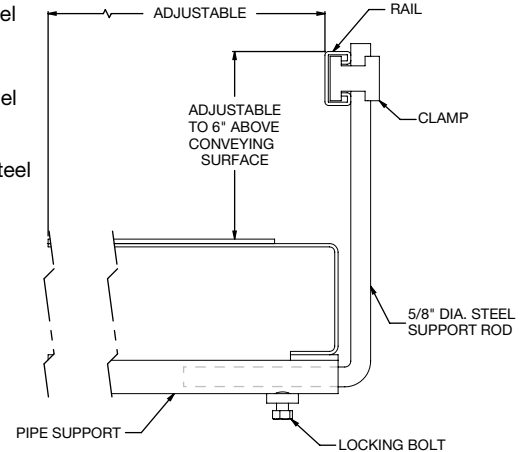
SOLID SIDE GUIDE



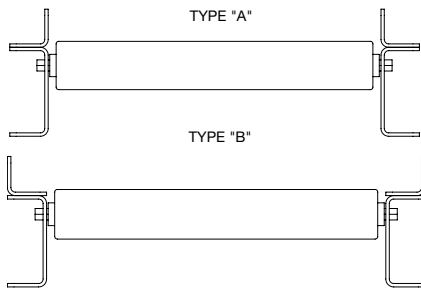
- Bolts to BS100B and BS300B belt conveyors
- Heights: 2 in., 4 in., 6 in., 9 in. and 12 in.
- Powder coated steel
- Includes formed top with alignment strip

ADJUSTABLE CHANNEL

- Adjustable channel guide rail
- 1 5/8 in. x 1 in. galvanized channel
- Continuous joint
- Powder coated steel

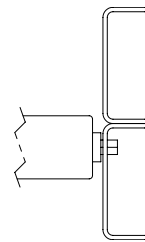


FIXED ANGLE



- Bolts to top of conveyor frame
- Type B is mounted with button head screws
- **1" x 1" x 12 ga.** – For skatewheel conveyor and RS14 gravity conveyors
- **1 1/2" x 1 1/2" x 12 ga.** – For RS19 and RS20 gravity conveyors, BS100C and BR100C belt conveyors
- **2" x 1 5/8" x 4 ga.** – For RS25 gravity conveyors
- Powder coated steel

FIXED CHANNEL



- Bolts to top of conveyor channel frame
- **2 1/2" x 1" x 12 ga.** – For skatewheel conveyor and RS14 gravity conveyors
- **3 1/2" x 1 1/2" x 12 ga.** – For RS19 and RS20 gravity conveyors, BS100C and BR100C belt conveyors
- Powder coated steel