

# CDS35

## CHAIN DRIVEN LIVE ROLLER CONVEYOR (3 1/2 in. dia. x .300 wall rollers)

The CDS35 chain driven live roller is ideal for heavier applications. Its rugged design will provide service under demanding manufacturing operations.

- Roll-to-roll chain drive
- 11 widths
- Reversible

		CONVEYOR WEIGHTS (LBS.)											
		CONVEYING SURFACE WIDTH											
		19 3/4"	21 3/4"	23 3/4"	27 3/4"	29 3/4"	33 3/4"	35 3/4"	41 3/4"	47 3/4"	53 3/4"	55 3/4"	63 3/4"
		BETWEEN FRAME WIDTH											
		23 3/4"	25 3/4"	27 3/4"	31 3/4"	33 3/4"	37 3/4"	39 3/4"	45 3/4"	51 3/4"	57 3/4"	59 3/4"	67 3/4"
		OVERALL WIDTH											
CHAIN SIZE	NO. 60 CHAIN	27 5/8"	29 5/8"	31 5/8"	35 5/8"	37 5/8"	41 5/8"	43 5/8"	49 5/8"	55 5/8"	61 5/8"	63 5/8"	71 5/8"
6" CENTER 5' LENGTH		775	813	852	928	967	1,042	1,080	1,195	1,326	1,442	1,481	1,636
PER FOOT		146	154	163	179	188	206	214	240	273	300	308	343
12" CENTER 5' LENGTH		532	553	574	615	636	676	697	759	836	900	921	1,005
PER FOOT		98	102	107	117	122	133	137	152	175	191	196	218

## STANDARD SPECIFICATIONS

**BED** – 7 in. x 9.8 lb. structural steel channel on drive side. 5 in. x 6.7 lb. structural steel channel on idler side. Powder coated. 3 1/2 in. dia. x .300 wall unplated tread rollers spaced on 6 in. or 12 in. centers. Rollers are above frame on idler side.

**CENTER DRIVE** – Underhung drive with outboard chain guard

**ROLLER-TO-ROLLER CHAIN** – No. 60 chain

**DRIVE CHAIN** – No. 80 chain

**CHAIN GUARD** – Formed steel upper and lower chain guard mounted to drive side channel frame to totally enclose drive chains.

**BEARINGS** – Sealed, pre-lubricated, ball bearings

**SPEED REDUCTION** – Sealed worm gear C-face speed reducer

**MOTOR** – 2 HP – 230/460V – 3 phase – 60 Hz totally enclosed fan cooled, energy efficient.

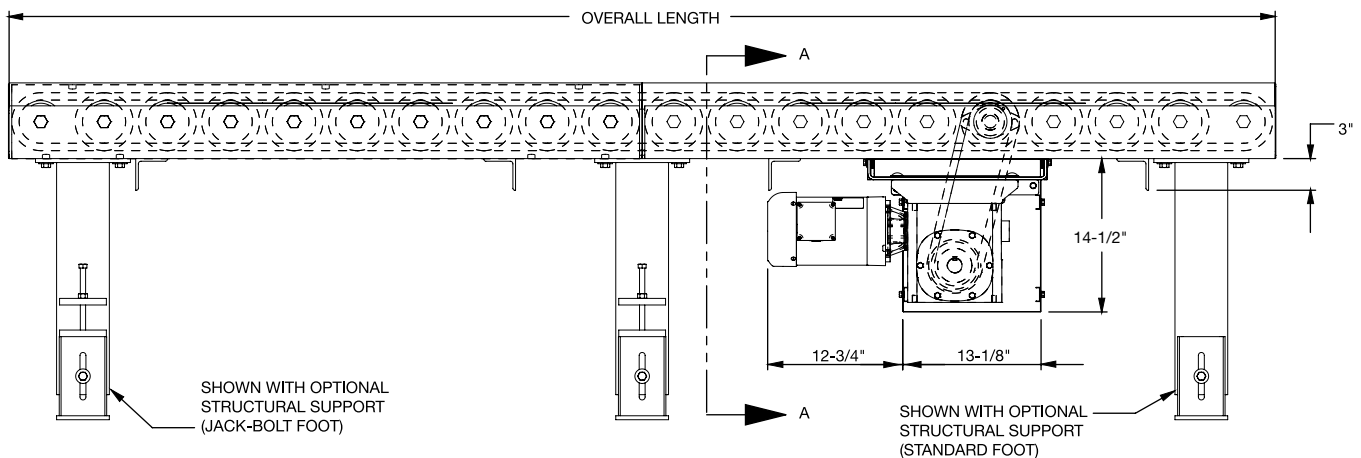
**CONVEYING SPEED** – Constant 30 FPM

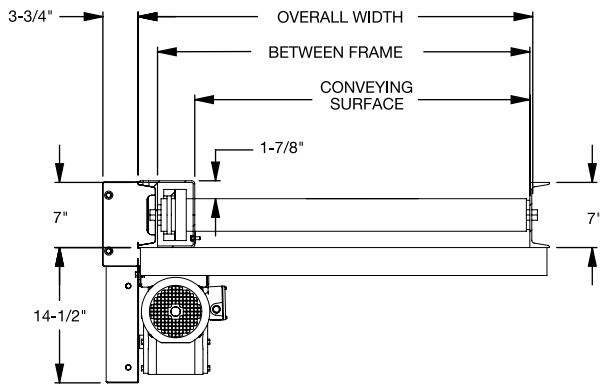
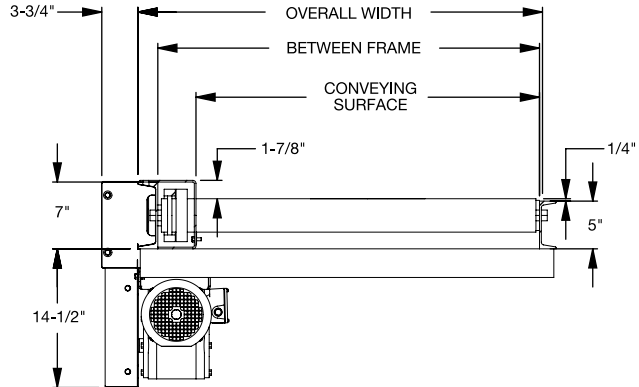
**FRAME CAPACITY** – Maximum load per linear foot of conveyor is 2000 lbs. with supports on with supports on 5 ft. centers. Not to exceed drive capacity in chart.

		LOAD CAPACITY CHART (LBS.)			
		CONVEYING SURFACE WIDTH	LENGTH		
FPM	HP		25'	50'	75'
15	2	15 3/4" - 29 3/4"	17,000*	15,000*	13,000*
		33 3/4" - 63 3/4"	15,500*	12,250*	8,750*
	3	15 3/4" - 29 3/4"	17,000*	15,000*	13,000*
		33 3/4" - 63 3/4"	15,500*	12,250*	8750*
35	2	15 3/4" - 29 3/4"	17,000*	15,000*	13,000*
		33 3/4" - 63 3/4"	15,500*	12,250*	8,750*
	3	15 3/4" - 29 3/4"	17,000*	15,000*	13,000*
		33 3/4" - 63 3/4"	15,500*	12,250*	8750*
45	2	15 3/4" - 29 3/4"	14,500*	12,500*	10,500*
		33 3/4" - 63 3/4"	13,250*	9,750*	6,250*
	3	15 3/4" - 29 3/4"	14,500*	12,500*	10,500*
		33 3/4" - 63 3/4"	13250*	9,750*	6,250*

Based on 6 in. roller centers, no. 60 chain and supports on 5 ft. \*Chain is limiting factor

## FULL LENGTH CONVEYOR



**SECTION VIEW A-A (ROLLERS HIGH/LOW)****ROLLERS LOW OPTION**

**OPTIONAL EQUIPMENT**

**FLOOR SUPPORTS** – 5 in. x 6.7 lb. structural channel floor supports are available in a wide range of adjustments. Specify top of roller elevation. One support is required at every bed joint and at ends of conveyor. Holes in feet are provided for lagging to floor. Knee braces supplied above 36 in. top of roller. Floor supports are also available with jack-bolt adjustment.

**CONVEYING SPEEDS** – Other constant and variable speeds available from 15-45 FPM in any increment. Consult factory for speeds outside this range.

**MOTORS** – Inverter duty, premium energy efficient, other characteristics. 3 HP maximum.

**DRIVE VARIATIONS** – Side mount high or low drives.

**ROLLERS SET LOW** – 7 in. x 9.8 lb. structural steel channel frame on drive side and idler side.

**ELECTRICAL CONTROLS** – One direction manual start switch, reversing drum switch, non-reversing and reversible starters and push button stations. AC variable frequency drive.