

CDC25T

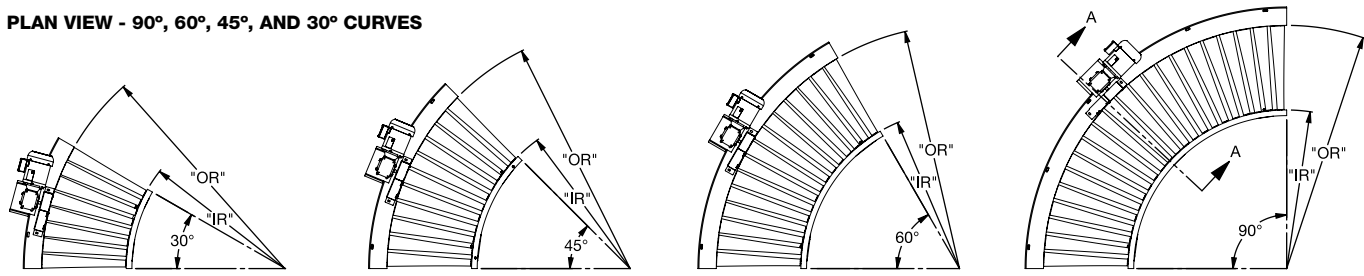
CHAIN DRIVEN LIVE ROLLER CURVE (Tapered Rollers)

The CDC25T chain driven live roller curves are compatible with straight sections and provide flexibility to your conveyor line. They are available self-powered or can be slave driven for a straight section. Tapered rollers aid in the orientation of packages.

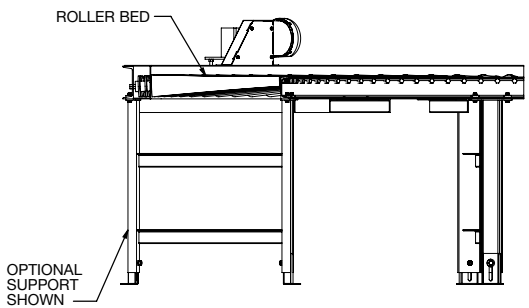
- 14 widths
- Tapered rollers
- Roll-to-roll chain drive
- Can be slaved from CDS25

CONVEYING SURFACE	BETWEEN FRAME	OVERALL WIDTH	INSIDE RADIUS	OUTSIDE RADIUS	NUMBER OF ROLLERS				WEIGHTS (LBS.)				TAPERED ROLLER	
					30°	45°	60°	90°	30°	45°	60°	90°	SMALL DIA.	LARGE DIA.
15 3/4"	19 3/4"	23 1/4"	42 1/4"	58"	6	9	12	18	269	356	428	605	2 1/2"	3 1/2"
17 3/4"	21 3/4"	25 1/4"		60"					284	378	452	649		
19 3/4"	23 3/4"	27 1/4"		62"					299	401	472	698		
21 3/4"	25 3/4"	29 1/4"		64"					315	424	498	744		
23 3/4"	27 3/4"	31 1/4"		66"					338	457	518	808		4"
27 3/4"	31 3/4"	35 1/4"		70"					370	506	568	903		
29 3/4"	33 3/4"	37 1/4"		72"					386	529	588	949		4 1/2"
33 3/4"	37 3/4"	41 1/4"		76"					429	601	632	1,071		
35 3/4"	39 3/4"	43 1/4"		82"					446	628	658	1,122		
39 3/4"	43 3/4"	47 1/4"		86"					479	678	703	1,218		
43 3/4"	47 3/4"	51 1/4"		90"					527	750	748	1,357		5"
47 3/4"	51 3/4"	55 1/4"		94"					578	827	817	1,511		
51 3/4"	55 3/4"	59 1/4"		100"					614	1080	889	1,619		
57 3/4"	61 3/4"	65 1/4"		106"					669	966	965	1,779		

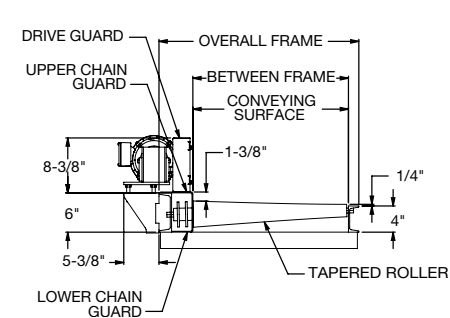
PLAN VIEW - 90°, 60°, 45°, AND 30° CURVES



END/SIDE VIEW



SECTION VIEW A-A



STANDARD SPECIFICATIONS

- BED** – 6" x 8.2# structural steel channel frame on drive side. 4" x 5.4# structural steel channel frame on idler side. Powder coated. Unplated tapered rollers. See chart for taper details. Rollers are above the frame on idler side.
- CENTER DRIVE** – Side mount high drive
- ROLLER-TO-ROLLER CHAIN** – No. 50 chain
- DRIVE CHAIN** – No. 50 chain
- CHAIN GUARD** – Formed steel upper and lower chain guard mounted to drive side channel frame to totally enclose drive chains.
- BEARINGS** – Sealed, pre-lubricated, ball bearings
- SPEED REDUCTION** – Sealed worm gear C-face speed reducer
- MOTOR** – 1 HP – 230/460V – 3 phase – 60 Hz totally enclosed fan cooled, energy efficient.
- CONVEYING SPEED** – Constant 30 FPM
- CAPACITY** – 4000 lbs. total distributed live load.

OPTIONAL EQUIPMENT

- FLOOR SUPPORTS** – 4 in. x 5.4 lb. structural channel floor supports are available in a wide range of adjustments. Specify top of roller elevation. One support is required at every bed joint and at ends of conveyor. Holes in feet are provided for lagging to floor. Knee braces supplied above 36 in. top of roller. Floor supports are also available with jack-bolt adjustment.
- CONVEYING SPEEDS** – Other constant and variable speeds available from 15-60 FPM in any increment. Consult factory for speeds outside this range.
- MOTORS** – Inverter duty, premium energy efficient, single phase, brake motor, other characteristics. 1 HP maximum.
- DRIVE VARIATIONS** – Side mount low drives on 60° and 90° curves
- ROLLERS SET LOW** – 6 in. x 8.2 lb. structural steel channel frame on drive side and idler side.
- OTHER ACCESSORIES** – Poly-tier supports, ceiling hangars.
- ELECTRICAL CONTROLS** – One direction manual start switch, reversing drum switch, non-reversing and reversible starters and push button stations. AC variable frequency drive.