

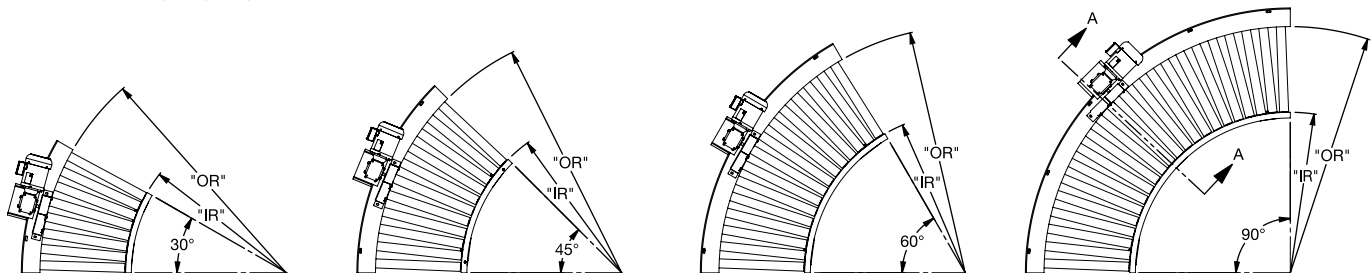
## CHAIN DRIVEN LIVE ROLLER CURVE (2 1/2 in. dia. x 11 ga. rollers)

The CDC25 chain driven live roller curves are compatible with straight sections and provide flexibility to your conveyor line. They are available self-powered or can be slave driven from a straight section.

- 16 widths
- Straight rollers
- Roller-to-roll chain drive
- Can be slaved from CDS25

CONVEYING SURFACE	BETWEEN FRAME	OVERALL WIDTH	INSIDE RADIUS				OUTSIDE RADIUS				NUMBER OF ROLLERS				WEIGHTS (LBS.)						
			30°	45°	60°	90°	30°	45°	60°	90°	30°	45°	60°	90°	30°	45°	60°	90°			
15 3/4"	19 3/4"	23 1/4"	58 3/4"	46 1/8"	58 7/8"	52 1/2"												335	405	518	701
17 3/4"	21 3/4"	25 1/4"	56 3/4"	44 1/8"	56 7/8"	50 1/2"												346	418	536	728
19 3/4"	23 3/4"	27 1/4"	54 3/4"	42 1/8"	54 7/8"	48 1/2"	74 1/2"	61 7/8"	74 5/8"	68 1/4"	8	11	15	22				356	432	555	755
21 3/4"	25 3/4"	29 1/4"	52 3/4"	40 1/8"	52 7/8"	46 1/2"												367	446	575	784
23 3/4"	27 3/4"	31 1/4"	50 3/4"	38 1/8"	50 7/8"	44 1/2"												377	459	594	811
27 3/4"	31 3/4"	35 1/4"	79"	71 1/2"	67 3/4"	64"												479	641	755	1063
29 3/4"	33 3/4"	37 1/4"	77"	69 1/2"	65 3/4"	62"												492	659	778	1096
33 3/4"	37 3/4"	41 1/4"	73"	65 1/2"	61 3/4"	58"												517	694	823	1160
35 3/4"	39 3/4"	43 1/4"	71"	63 1/2"	59 3/4"	56"	106 3/4"	99 1/4"	95 1/2"	91 3/4"								531	713	847	1195
39 3/4"	43 3/4"	47 1/4"	67"	59 1/2"	55 3/4"	52"												556	748	893	1260
43 3/4"	47 3/4"	51 1/4"	63"	55 1/2"	51 3/4"	48"					10	14	18	26				582	785	940	1327
47 3/4"	51 3/4"	55 1/4"	59"	51 1/2"	47 3/4"	44"												624	845	1019	1433
49 3/4"	53 3/4"	57 1/4"	67"	59 1/2"	55 3/4"	52"												673	889	1068	1516
51 3/4"	55 3/4"	59 1/4"	65"	57 1/2"	53 3/4"	50"	116 3/4"	109 1/4"	105 1/2"	101 3/4"								687	907	1092	1550
53 3/4"	57 3/4"	61 1/4"	63"	55 1/2"	51 3/4"	48"												701	926	1116	1583
55 3/4"	59 3/4"	63 1/4"	61"	53 1/2"	49 3/4"	46"												716	946	1142	1620

### PLAN VIEW - 30°, 45°, 60°, AND 90° CURVES



### STANDARD SPECIFICATIONS

**BED** – 6 in. x 8.2 lb. structural steel channel on drive side. 4 in. x 5.4 lb. structural steel channel on idler side. Powder coated. 2 1/2 in. dia. x 11 ga. unplated tread rollers. Rollers are above frame on idler side.

**CENTER DRIVE** – Side mount high drive

**ROLLER-TO-ROLLER CHAIN** – No. 50 chain

**DRIVE CHAIN** – No. 50 chain

**CHAIN GUARD** – Formed steel upper and lower chain guard mounted to drive side channel frame to totally enclose drive chains

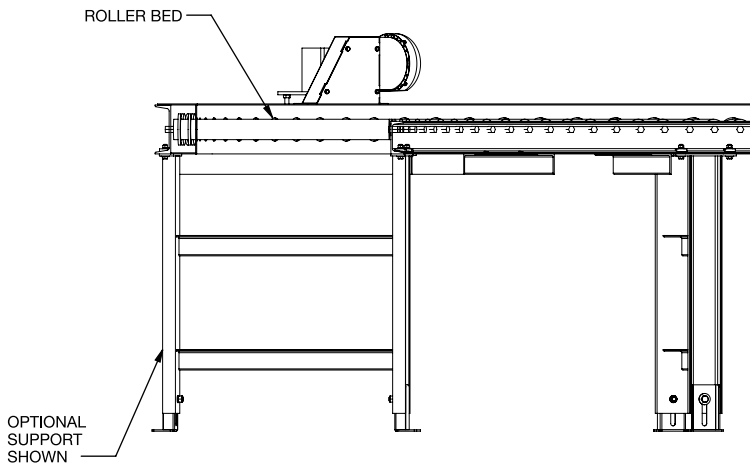
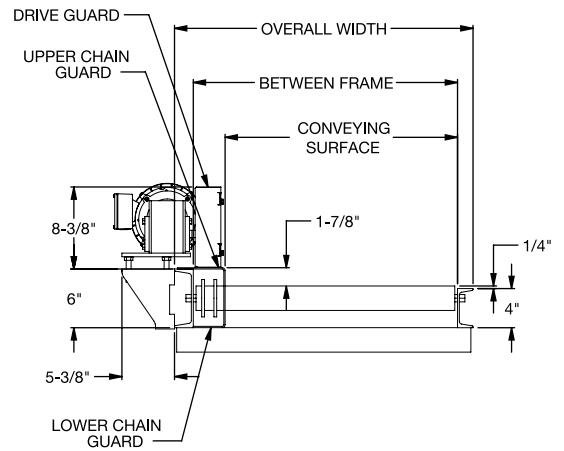
**BEARINGS** – Sealed, pre-lubricated, ball bearings

**SPEED REDUCTION** – Sealed worm gear C-face speed reducer

**MOTOR** – 1 HP – 230/460V – 3 phase – 60 Hz totally enclosed fan cooled, energy efficient

**CONVEYING SPEED** – Constant 30 FPM

**CAPACITY** – 4000 lbs. total distributed live load based on a 90° curve. Not to exceed drive capacity in chart.

**END/SIDE VIEW****SECTION VIEW A-A**

**OPTIONAL EQUIPMENT**

**FLOOR SUPPORTS** – 4 in. x 5.4 lb. structural channel floor supports are available in a wide range of adjustments. Specify top of roller elevation. One support is required at every bed joint and at ends of conveyor. Holes in feet are provided for lagging to floor. Knee braces recommended above 36 in. top of roller. Floor supports are also available with jack-bolt adjustment.

**CONVEYING SPEEDS** – Other constant and variable speeds available from 15-60 FPM in any increment. Consult factory for speeds outside this range.

**MOTORS** – Inverter duty, premium energy efficient, single phase, brake motor, other characteristics. 1 HP maximum.

**DRIVE VARIATIONS** – Side mount low drives on 60° and 90° curves

**ROLLERS** – 2 9/16 in. dia. x .180 wall unplated rollers (Model CDC26)

**ROLLERS SET LOW** – 6 in. x 8.2 lb. structural steel channel frame on drive side and idler side

**OTHER ACCESSORIES** – Poly-tier supports, ceiling hangars.

**ELECTRICAL CONTROLS** – One direction manual start switch, reversing drum switch, non-reversing and reversible starters and push button stations. AC variable frequency drive.