

CDC19T

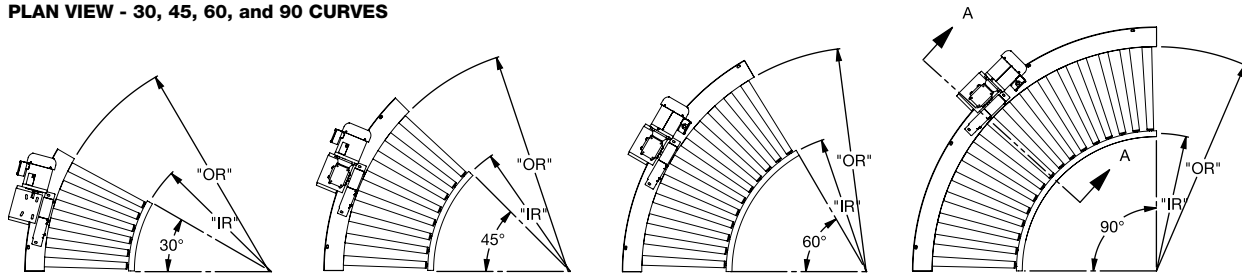
CHAIN DRIVEN LIVE ROLLER CURVE (Tapered Rollers)

The CDC19T chain driven live roller curves are compatible with straight sections and provide flexibility to your conveyor line. They are available self-powered or can be slave driven from a straight section. Tapered rollers aid in the alignment of packages

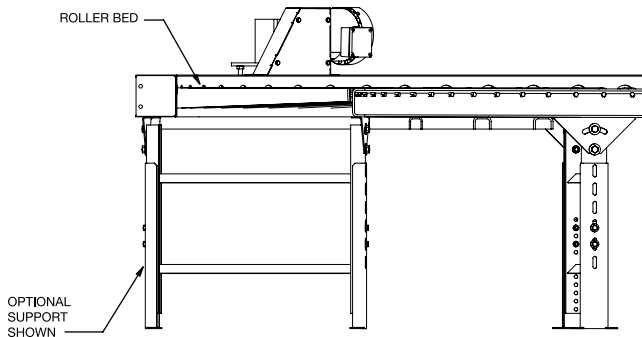
- 11 Widths
- Tapered rollers
- Roll-to-roll chain drive
- Can be slave driven from CDS19

CONVEYING SURFACE	BETWEEN FRAME	OVERALL FRAME	INSIDE RADIUS	OUTSIDE RADIUS	ROLLER QUANTITY				WEIGHT (LBS.)			
					30°	45°	60°	90°	30°	45°	60°	90°
12 1/4"	15 1/2"	18 1/2"	35 1/4"	47 1/2"	6	8	11	16	201	245	287	384
14 1/4"	17 1/2"	20 1/2"		49 1/2"	6	8	11	16	204	249	291	397
16 1/4"	19 1/2"	22 1/2"		51 1/2"	6	8	11	16	212	261	305	418
18 1/4"	21 1/2"	24 1/2"		53 1/2"	6	8	11	16	219	271	318	438
20 1/4"	23 1/2"	26 1/2"		55 1/2"	6	8	11	16	226	281	336	457
22 1/4"	25 1/2"	28 1/2"		57 1/2"	6	8	11	16	234	292	350	479
24 1/4"	27 1/2"	30 1/2"		59 1/2"	6	8	11	16	242	303	367	501
28 1/4"	31 1/2"	34 1/2"	50 3/4"	79"	7	11	14	22	272	367	435	634
30 1/4"	33 1/2"	36 1/2"		81"	7	11	14	22	281	381	453	662
34 1/4"	37 1/2"	40 1/2"		85"	7	11	14	22	296	405	483	711
36 1/4"	39 1/2"	42 1/2"		87"	7	11	14	22	306	420	503	794

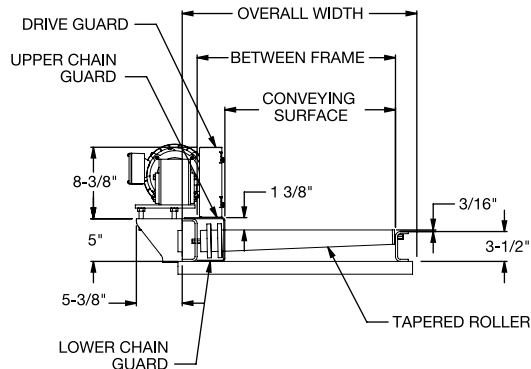
PLAN VIEW - 30, 45, 60, and 90 CURVES



END VIEW



SECTION VIEW A-A



STANDARD SPECIFICATIONS

BED – 5 in. deep x 1 1/2 in. flange x 1/4 in. channel on drive side. 3 1/2 in. deep x 1 1/2 in. flange x 1/4 in. channel on idler side. Powder coated. 2 1/2 in. dia. tapered to 1 11/16 in. dia. x 14 ga. unplated tread rollers. Rollers are above frame on idler side.

CENTER DRIVE – Side mount high drive

ROLLER CHAIN – No. 40 chain

DRIVE CHAIN – No. 40 chain

CHAIN GUARD – Formed steel upper and lower chain guard mounted to drive side channel frame to totally enclose drive chains

BEARINGS – Sealed, pre-lubricated, ball bearings

Speed Reduction – Sealed worm gear C-face speed reducer

MOTOR – 1/2 HP –230/460V – 3 phase – 60 Hz totally enclosed fan cooled, energy efficient

CONVEYING SPEED – Constant 35 FPM

CAPACITY – 850 lbs. total distributed live load based on a 90° curve. Not to exceed drive capacity in chart.

OPTIONAL EQUIPMENT

FLOOR SUPPORTS – Floor supports are available in wide range of adjustments. Specify top of roller elevations. One support is required at every bed joint and at ends of conveyor. Holes in feet are provided for lagging to floor. Knee braces supplied above 36 in. top of roller.

CONVEYING SPEEDS – Other constant and variable speeds available from 15-60 FPM in any increment. Consult factory for speeds outside this range.

MOTORS – Inverter duty, premium energy efficient, single phase, brake motor, other characteristics. 1 HP maximum.

DRIVE VARIATIONS – Side mount low drives on 60° and 90° curves

ROLLERS SET LOW – 5 in. deep x 1 1/2 in. flange x 1/4 in. channel frame on drive side and idler side

ELECTRICAL CONTROLS – One direction manual start switch, reversing drum switch, non-reversing and reversible starters and push button stations. AC variable frequency drive.