

CDC19

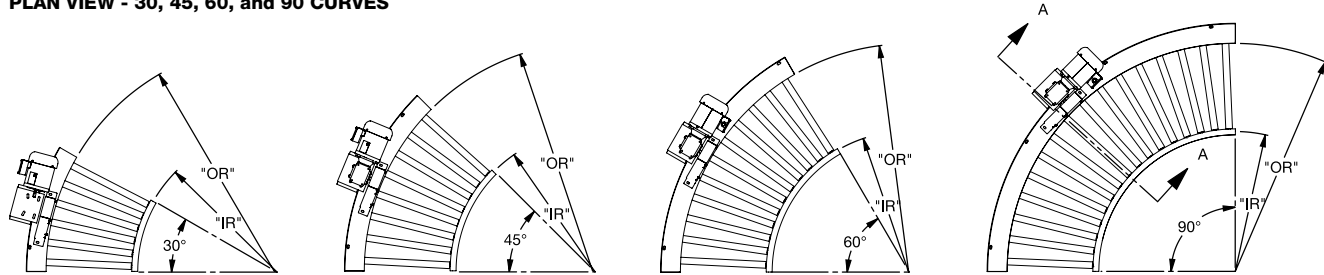
CHAIN DRIVEN LIVE ROLLER CURVE (1.9 in. dia. x .145 wall rollers)

The CDC19 chain driven live roller curves are compatible with straight sections and provide flexibility to your conveyor line. They are available self-powered or can be slave driven from a straight section.

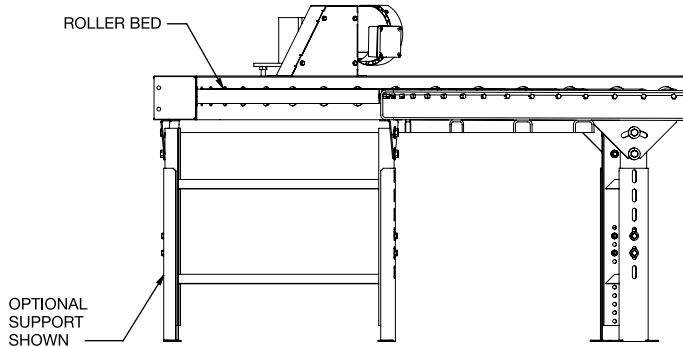
- 11 widths
- Straight rollers
- Roll-to-roll chain drive
- Can be slave driven from CDS19

CONVEYING SURFACE	BETWEEN FRAME	OVERALL FRAME	INSIDE RADIUS	OUTSIDE RADIUS	ROLLER QUANTITY				WEIGHT (LBS.)			
					30°	45°	60°	90°	30°	45°	60°	90°
12 1/4"	15 1/2"	18 1/2"	35 1/4"	47 1/2"	6	8	11	16	196	238	277	374
14 1/4"	17 1/2"	20 1/2"		49 1/2"	6	8	11	16	202	247	288	392
16 1/4"	19 1/2"	22 1/2"		51 1/2"	6	8	11	16	210	258	301	412
18 1/4"	21 1/2"	24 1/2"		53 1/2"	6	8	11	16	217	268	314	432
20 1/4"	23 1/2"	26 1/2"		55 1/2"	6	8	11	16	224	278	332	451
22 1/4"	25 1/2"	28 1/2"		57 1/2"	6	8	11	16	231	288	345	471
24 1/4"	27 1/2"	30 1/2"	50 3/4"	59 1/2"	6	8	11	16	238	298	360	491
28 1/4"	31 1/2"	34 1/2"		79"	7	11	14	22	268	360	427	621
30 1/4"	33 1/2"	36 1/2"		81"	7	11	14	22	276	373	443	647
34 1/4"	37 1/2"	40 1/2"		85"	7	11	14	22	291	397	473	696
36 1/4"	39 1/2"	42 1/2"		87"	7	11	14	22	300	410	490	771

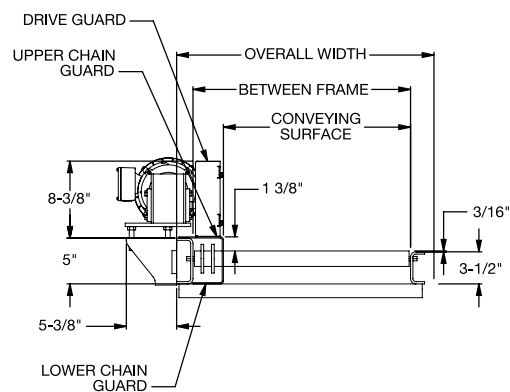
PLAN VIEW - 30, 45, 60, and 90 CURVES



END VIEW



SECTION VIEW A-A



STANDARD SPECIFICATIONS

BED – 5 in. deep x 1 1/2 in. flange x 1/4 in. channel on drive side. 3 1/2 in. deep x 1 1/2 in. flange x 1/4 in. channel on idler side. Powder coated. 1.9 in. dia. x .145 wall unplated tread rollers. Rollers are above frame on idler side.

CENTER DRIVE – Side mount high drive

ROLLER CHAIN – No. 40 chain

DRIVE CHAIN – No. 40 chain

CHAIN GUARD – Formed steel upper and lower chain guard mounted to drive side channel frame to totally enclose drive chains

BEARINGS – Sealed, pre-lubricated, ball bearings

SPEED REDUCTION – Sealed worm gear C-face speed reducer

MOTOR – 1/2 HP –230/460V – 3 phase – 60 Hz totally enclosed fan cooled, energy efficient

CONVEYING SPEED – Constant 35 FPM

CAPACITY – 850 lbs. total distributed live load based on a 90° curve. Not to exceed drive capacity in chart.

Specification Sheet – 02/02/15

OPTIONAL EQUIPMENT

FLOOR SUPPORTS – Floor supports are available in wide range of adjustments. Specify top of roller elevation. One support is required at every bed joint and at ends of conveyor. Holes in feet are provided for lagging to floor. Knee braces supplied above 36 in. top of roller.

CONVEYING SPEEDS – Other constant and variable speeds available from 15-60 FPM in any increment. Consult factory for speeds outside this range.

MOTORS – Inverter duty, premium energy efficient, single phase, brake motor, other characteristics. 3/4 HP maximum.

DRIVE VARIATIONS – Side mount low drives on 60° and 90° curves

ROLLERS SET LOW – 5 in. deep x 1 1/2 in. flange x 1/4 in. channel frame on drive side and idler side

ELECTRICAL CONTROLS – One direction manual start switch, reversing drum switch, non-reversing and reversible starters and push button stations. AC variable frequency drive.