

CDS19



CHAIN DRIVEN LIVE ROLLER CONVEYOR (1.9 in. dia. x .145 wall rollers)

The CDS19 chain driven live roller is ideal for handling medium loads such as totes, wheels and empty drums. Roll-to-roll chain driven rollers provide positive drive making it ideal for oily conditions that are not suitable for belt driven live roller.

- Roll-to-roll chain drive
- 11 widths
- Reversible

		CONVEYOR WEIGHTS (LBS.)										
		CONVEYING SURFACE WIDTH										
		12 1/4"	14 1/4"	16 1/4"	18 1/4"	20 1/4"	22 1/4"	24 1/4"	28 1/4"	30 1/4"	34 1/4"	36 1/4"
		BETWEEN FRAME WIDTH										
		15 1/2"	17 1/2"	19 1/2"	21 1/2"	23 1/2"	25 1/2"	27 1/2"	31 1/2"	33 1/2"	37 1/2"	39 1/2"
		OVERALL WIDTH										
CHAIN SIZE		18 1/2"	20 1/2"	22 1/2"	24 1/2"	26 1/2"	28 1/2"	30 1/2"	34 1/2"	36 1/2"	40 1/2"	42 1/2"
4" CENTER 10' LENGTH	NO. 40 CHAIN	454	480	506	529	555	581	604	656	682	731	757
PER FOOT		36	39	41	44	46	48	51	55	58	62	65
6" CENTER 10' LENGTH		381	399	417	433	451	469	485	521	539	573	591
PER FOOT		29	31	32	34	35	37	38	42	43	46	48

STANDARD SPECIFICATIONS

BED – 5 in. deep x 1 1/2 in. flange x 1/4 in. channel on drive side. 3 1/2 in. deep x 1 1/2 in. flange x 1/4 in. channel on idler side. Powder coated. 1.9 in. dia. x .145 wall unplated tread rollers spaced on 4 in. or 6 in. centers. Rollers are above frame on idler side.

CENTER DRIVE – Underhung drive with outboard chain guard

ROLLER-TO-ROLLER CHAIN – No. 40 chain

DRIVE CHAIN – No. 60 chain

CHAIN GUARD – Formed steel upper and lower chain guard mounted to drive side channel frame to totally enclose drive chains

BEARINGS – Sealed, pre-lubricated, ball bearings

SPEED REDUCTION – Sealed worm gear C-face speed reducer

MOTOR – 1/2 HP – 230/460V – 3 phase – 60 Hz totally enclosed fan cooled, energy efficient

CONVEYING SPEED – Constant 35 FPM

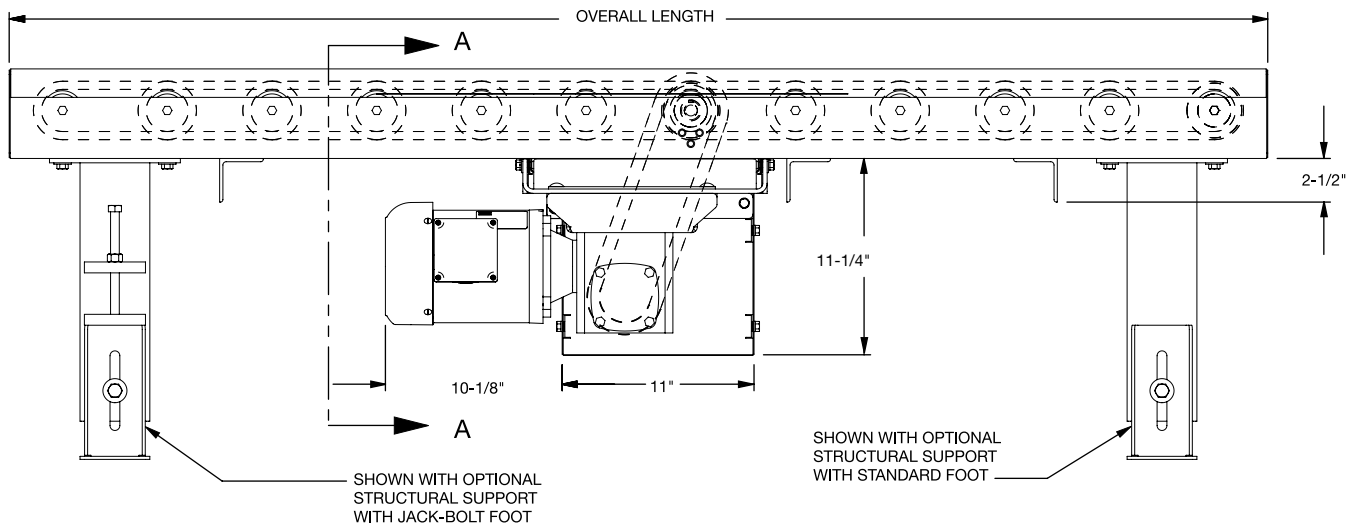
FRAME CAPACITY – Maximum load per linear foot of conveyor is 150 lbs. with supports on 10 ft. centers, 250 lbs. with supports on 5 ft. centers. Not to exceed drive capacity in chart.

		LOAD CAPACITY CHART (LBS.)			
		CONVEYING SURFACE WIDTH	LENGTH		
FPM	HP		25'	50'	75'
15	1/2	12 1/4" - 20 1/4"	2125†	4250†	6375†
		22 1/4" - 36 1/4"	2125†	4250†	6375†
	1	12 1/4" - 20 1/4"	2125†	4250†	6375†
		22 1/4" - 36 1/4"	2125†	4250†	6375†
30	1/2	12 1/4" - 20 1/4"	2125†	4250†	6005
		22 1/4" - 36 1/4"	2125†	4250†	5420
	1	12 1/4" - 20 1/4"	2125†	4250†	6375†
		22 1/4" - 36 1/4"	2125†	4250†	6375†
45	1	12 1/4" - 20 1/4"	2125†	4185	3835
		22 1/4" - 36 1/4"	2125†	3790	3245
	2	12 1/4" - 20 1/4"	2125†	4250†	6375†
		22 1/4" - 36 1/4"	2125†	4250†	6300*

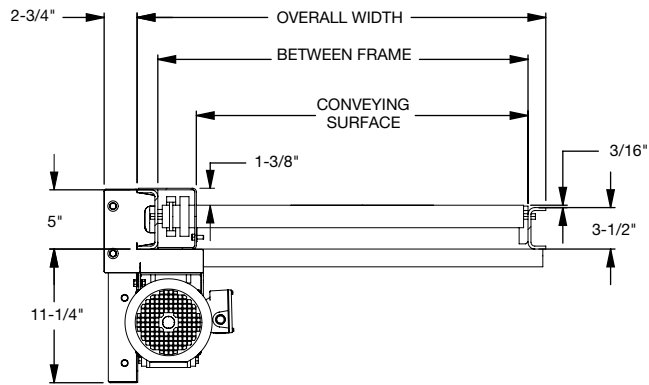
Based on 6 in. roller centers and supports on 10 ft. centers

*Chain is limiting factor

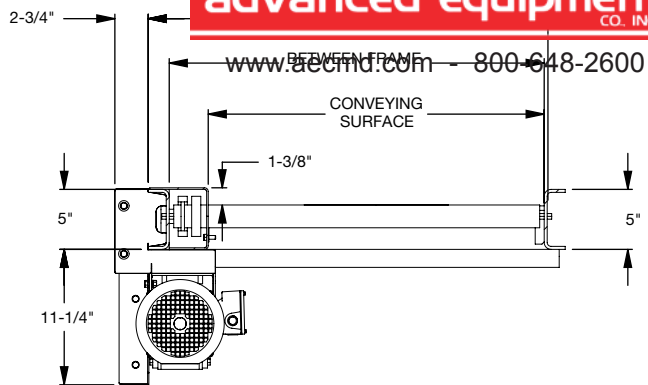
†Frame is limiting factor



SECTION VIEW A-A (ROLLERS HIGH/LOW)



ROLLERS LOW OPT



www.aecimf.com 800-648-2600

OPTIONAL EQUIPMENT

FLOOR SUPPORTS – Floor supports are available in wide range of adjustments. Specify top of roller elevations. One support is required at every bed joint and at ends of conveyor. Holes in feet are provided for lagging to floor. Knee braces supplied above 36 in. top of roller.

CONVEYING SPEEDS – Other constant and variable speeds available from 15-75 FPM in any increment. Consult factory for speeds outside this range.

MOTORS – Inverter duty, premium energy efficient, single phase, brake motor, other characteristics. 1 HP maximum.

DRIVE VARIATIONS – Side mount high or low drives

ROLLERS SET LOW – 5 in. deep x 1 1/2 in. flange x 1/4 in. channel frame on drive side and idler side

CHAIN CROSS-OVER – Transfers power from one side to the other

TRANSFERS – Right angle chain transfers available

ELECTRICAL CONTROLS – One direction manual start switch, reversing drum switch, non-reversing and reversible starters and push button stations. AC variable frequency drive.