

VBC14

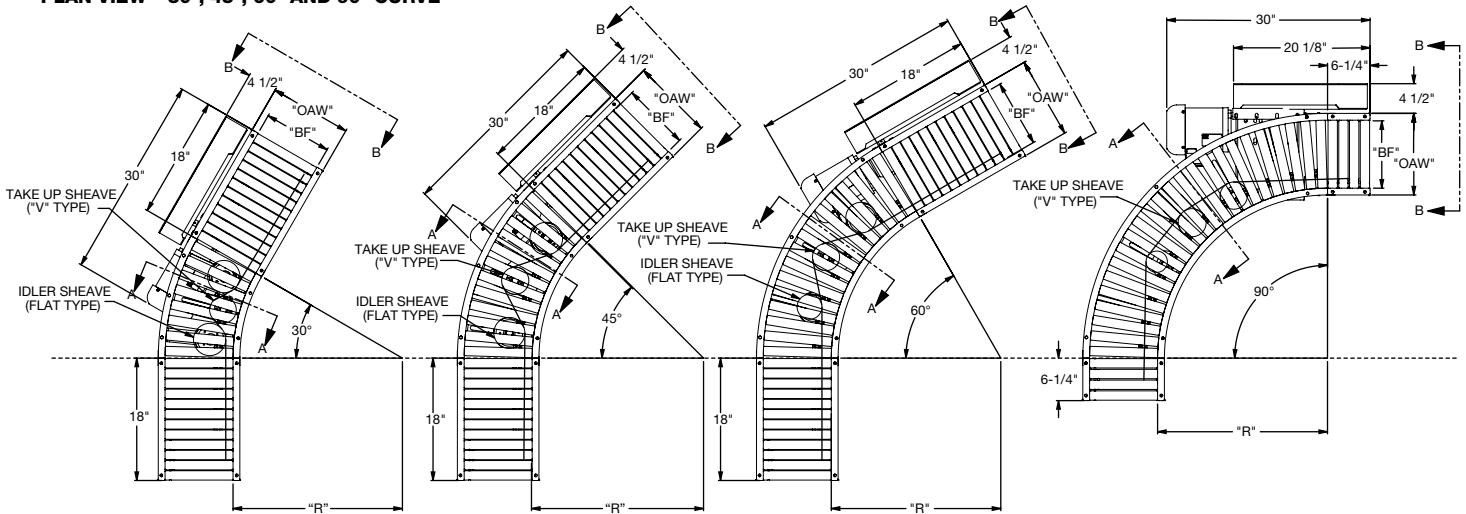
V-BELT DRIVEN LIVE ROLLER CURVE (1 3/8 in. dia. x 18 ga. rollers)

The VBC14 live roller curves are compatible with straight sections and spurs providing flexibility to your conveyor line. Offering a positive drive for negotiating 30°, 45°, 60°, or 90° turns, it is available self-powered or it can be slave driven from a straight section or spur.

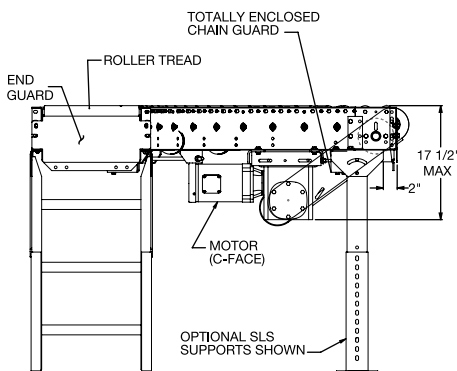
- 4 Widths
- Reversible
- 30, 45, 60 and 90 degree curves

BETWEEN FRAME WIDTH	OVERALL FRAME WIDTH	"R"	NUMBER OF ROLLERS				WEIGHT (LBS.)			
			30°	45°	30°	45°	30°	45°	30°	45°
10"	12"	25"	32	36	40	32	242	252	262	272
13"	15"						248	258	268	278
16"	18"						247	267	277	287
22"	24"						272	252	292	302

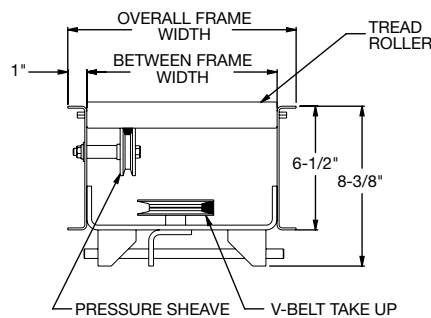
PLAN VIEW - 30°, 45°, 60° AND 90° CURVE



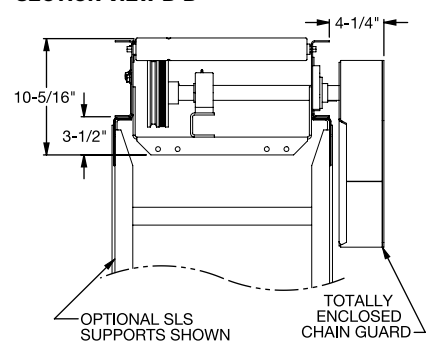
END/SIDE VIEW



SECTION VIEW A-A



SECTION VIEW B-B



Note: Curves are non-accumulating

STANDARD SPECIFICATIONS

BED – 6 1/2 in. deep x 1 in. flange x 12 ga. powder coated steel channel with 1 3/8 in. dia. x 18 ga. galvanized rollers

CURVES: 30, 45, 60 and 90 degree curves with 25 in. radius

COUPLINGS – Butt type for connecting to VBS14, VBCS14, and VBSS14 conveyors

END DRIVE – Mounted underneath bed section on outside radius.

DRIVE BELT – Endless B-section V-Belt, industrial grade

PRESSURE SHEAVES – 2 1/2 in. dia. with 3/8 in. bore

IDLER SHEAVE – 4 in. dia. x 5/8 in. bore V-type and/or 5 1/2 in. dia. 5/8 in. bore flat-type

BEARINGS – Tread rollers have pre-lubricated ball bearings. Flange and pillow block bearings are sealed, pre-lubricated.

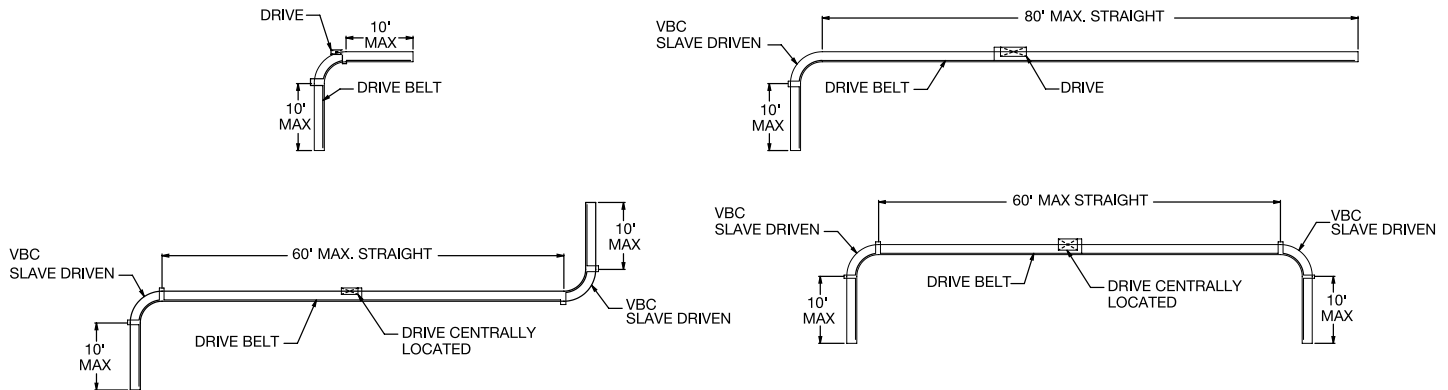
CONVEYING SPEED – Constant 65 FPM

SPEED REDUCTION – Sealed worm gear speed reducer with No. 50 roller chain to drive shaft

MOTOR – 1/2 HP – 230/460V-3 phase 60 Hz totally enclosed fan cooled, energy efficient

CAPACITY – 150 lbs. total distributed live load

Horsepower required to slave-drive V-belt curves from straight sections affects the maximum length of straight sections due to the capacities of the driving V-belt. The four arrangements shown. Illustrate basic slave limitations. Other arrangements are possible.



OPTIONAL EQUIPMENT

FLOOR SUPPORTS – SLS Type floor supports are available with a wide range of adjustment. Specify top of roller elevation. One support required at every bed joint and ends of conveyor. Holes in feet for lagging to floor. Knee braces supplied on SLS-7 support and above.

CONVEYING SPEED – Other constant and variable speeds. Note: Capacity and accumulation feature affected with speed change.

- Underhung and side mounted drives: 25 – 120 FPM in any increment
- Shaft mounted drive: 25, 30, 45, 50, 65, 85 and 105 FPM nominal
- Consult factory for speeds not listed

MOTORS – Inverter duty, premium energy efficient, single phase, brake motor, other characteristics. 1 HP maximum.

END DRIVE – Mounted on inside radius. Minimum elevation 18-7/8 in.

SHAFT MOUNTED DRIVE – Drive unit mounted on extended drive shaft. Mounting bracket and torque arm allow for multiple mounting positions. Minimum elevation:

- Standard sheave retainer: 9 3/4 in TOR
- Low elevation sheave retainer: 8 1/4 in. TOR

SIDE MOUNTED DRIVE – Motor reducer unit mounted to side of conveyor. Minimum elevation:

- Standard sheave retainer: 10 1/4 in. TOR
- Low elevation sheave retainer: 9 1/2 in. TOR

GUIDE RAILS – Adjustable channel guide rails, fixed angle and channel guide rails. NOTE: If product comes in contact with guide rails, product flow will be affected

TAPERED ROLLERS – Contact factory

OTHER ACCESSORIES – Poly-tier supports, ceiling hangars. See accessory section

SLAVE DRIVEN – Standard drive may be omitted and curve can be slave driven from VBS14, VBCS14 or VBSS14. (Provide sketch showing location of slave connection.) Minimum elevation 11 in.

ELECTRICAL CONTROLS – Non-reversing or reversible magnetic starters and push-button stations. AC variable frequency drive.