

WSC/WAC

GRAVITY SKATEWHEEL CURVE CONVEYOR

Gravity skatewheel curves are compatible with straight section providing flexibility to your conveyor line. The differential action of wheels assures proper orientation of packages.

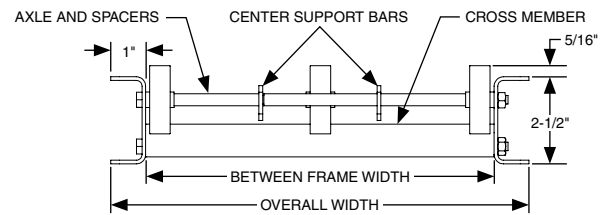
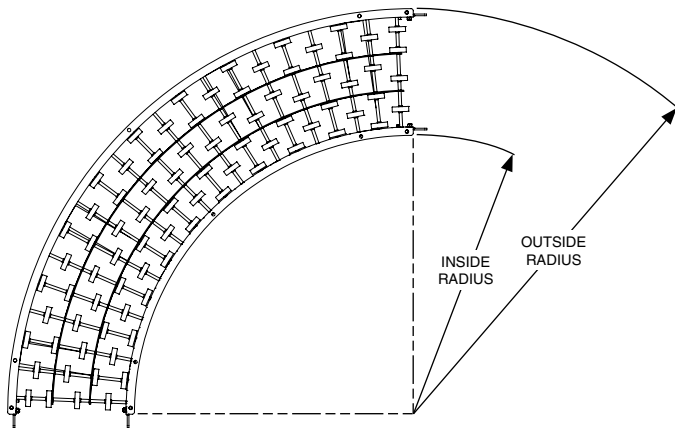


- 4 Widths
- Powder coated steel or aluminum frames
- 30, 45, 60 and 90 degree curves

STEEL FRAMES															
12" OAW				15" OAW				18" OAW				24" OAW			
MODEL NO.	DEGREE	WPC	WT. (LBS.)	MODEL NO.	DEGREE	WPC	WT. (LBS.)	MODEL NO.	DEGREE	WPC	WT. (LBS.)	MODEL NO.	DEGREE	WPC	WT. (LBS.)
WSC-12-30	30	30	14	WSC-15-30	30	40	16	WSC-18-30	30	45	18	WSC-24-30	30	60	23
WSC-12-45	45	30	21	WSC-15-45	45	40	23	WSC-18-45	45	45	25	WSC-24-45	45	78	37
WSC-12-60	60	42	30	WSC-15-60	60	56	35	WSC-18-60	60	63	37	WSC-24-60	60	102	54
WSC-12-90	90	63	40	WSC-15-90	90	84	46	WSC-18-90	90	94	49	WSC-24-90	90	156	72

ALUMINUM FRAMES															
12" OAW				15" OAW				18" OAW				24" OAW			
MODEL NO.	DEGREE	WPC	WT. (LBS.)	MODEL NO.	DEGREE	WPC	WT. (LBS.)	MODEL NO.	DEGREE	WPC	WT. (LBS.)	MODEL NO.	DEGREE	WPC	WT. (LBS.)
WAC-12-30	30	30	8	WAC-15-30	30	40	9	WAC-18-30	30	45	10	WAC-24-30	30	60	14
WAC-12-45	45	30	12	WAC-15-45	45	40	14	WAC-18-45	45	45	15	WAC-24-45	45	78	23
WAC-12-60	60	42	17	WAC-15-60	60	56	20	WAC-18-60	60	63	21	WAC-24-60	60	102	33
WAC-12-90	90	63	22	WAC-15-90	90	84	26	WAC-18-90	90	94	28	WAC-24-90	90	156	43

RADIUS		
OVERALL WIDTH	INSIDE RADIUS	OUTSIDE RADIUS
12"	36"	48"
15"	33"	48"
18"	30"	48"
24"	36"	60"



STANDARD SPECIFICATIONS

FRAME - 2 1/2 in. deep x 1 in. flange x 12 ga. powder coated steel or 1/8 in. aluminum channel with bolt-in cross members.

WIDTHS - 12 in., 15 in., 18 in., and 24 in. overall width.

CURVES - 30, 45, 60 and 90 degree curves. See radius chart.

COUPLINGS - Hooks and bolts on both ends of curve.

WHEELS - 1 15/16 in. dia., ball bearings run in hardened raceway with life time lubrication. Corrosion-resistant aluminum or zinc plated steel.

AXLES - 1/4 in. dia. threaded one end with locknut on 3 in. equivalent centers.

OPTIONAL EQUIPMENT

SUPPORTS - Portable tripod stands, portable T-stand carriages and stationary floor supports are available in a wide range of adjustments.

SPECIAL DEGREE CURVES - Consult factory.

WIDTHS - Other in-between widths from 12 in. to 30 in. overall width.

WHEELS/COVERS - Black or white plastic wheels are available in place of steel or aluminum wheels. Black neoprene covers are also available.

BUTT COUPLINGS - In place of hooks and bolts, these brackets allow a more permanent connection with adjacent conveyor.

GUIDE RAILS - Adjustable channel guide rails, fixed angle and channel guide rails.